

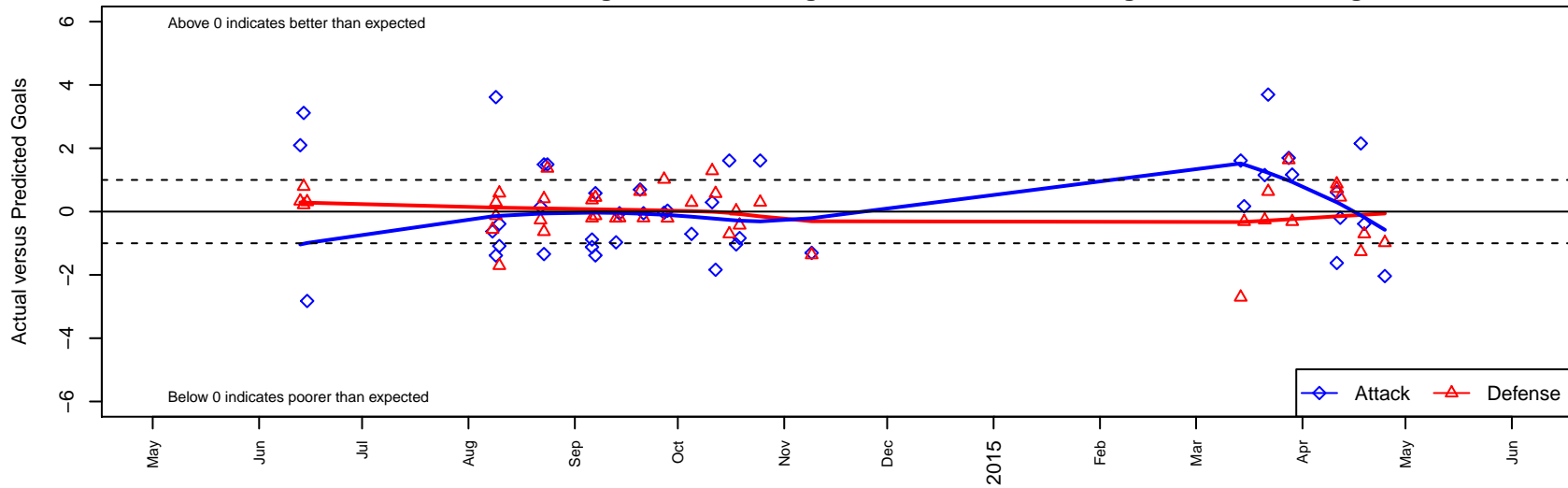
WA East Kaiel G02

Washington East SC
 Spokane, WA
 G02 total strength=947
 attack=2.33 defense=1.19
 fall league = PSPL Premier U12
 spr league = Spr PSPL SuperLeague U12

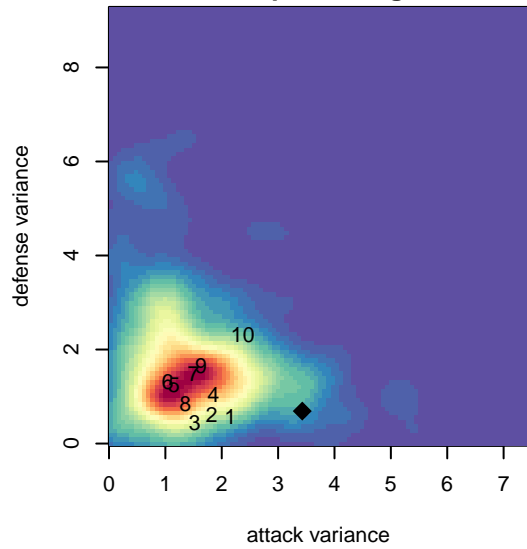
alt names used:
 WASHINGTON EAST KAIEL G02 (WA)
 Washington East-Kaiel
 Washington East
 Washington East SC Kaiel
 WASHINGTON EAST KAIEL G02 (WA)
 Washington East SC Kaiel
 WASHINGTON EAST G03 – KAIEL (WA)

Venues played:
 2014 Olivia Chaffin GU12
 2014 Les Schwab NW Cup U12 Gold U12
 2014 REDAPT Cup Gold U12
 2014 Pend Oreille Cup GU12 11v11
 2014 PSPL Premier U12
 2014 Spr PSPL SuperLeague U12
 2014 WA Cup GU12 Gold/Platinum U12

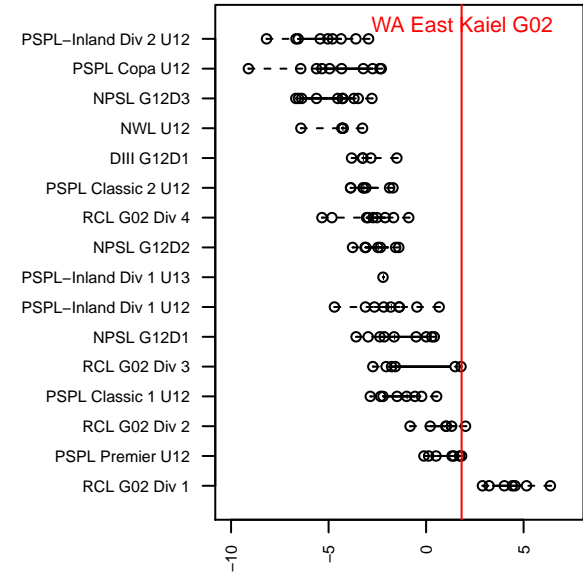
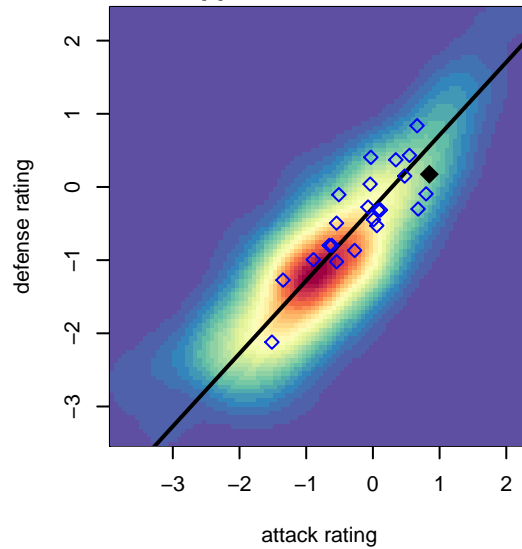
WA East Kaiel G02
 Dots are actual minus expected GF (blue circles) and GA (red triangles).
 Blue line is smoothed change in attack strength. Red is smoothed change in defense strength.



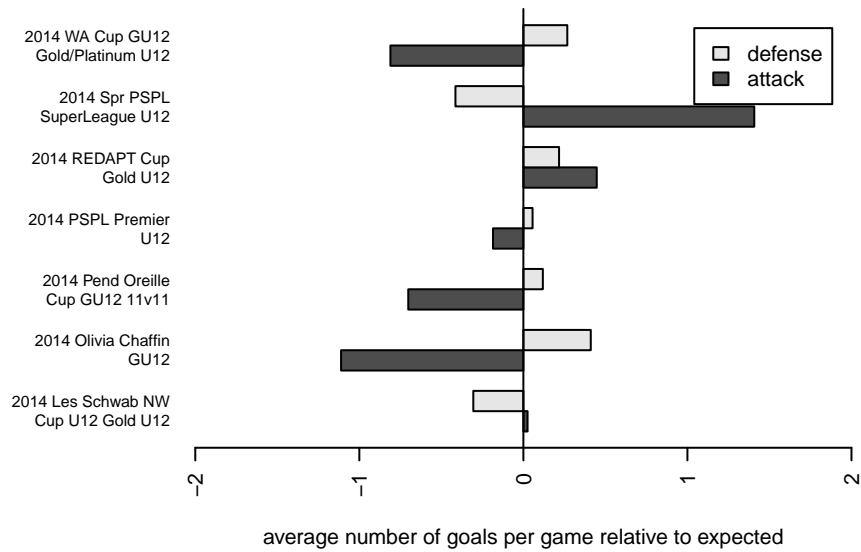
**attack and defense variance (black dot)
relative to other teams
and top 10 in region**



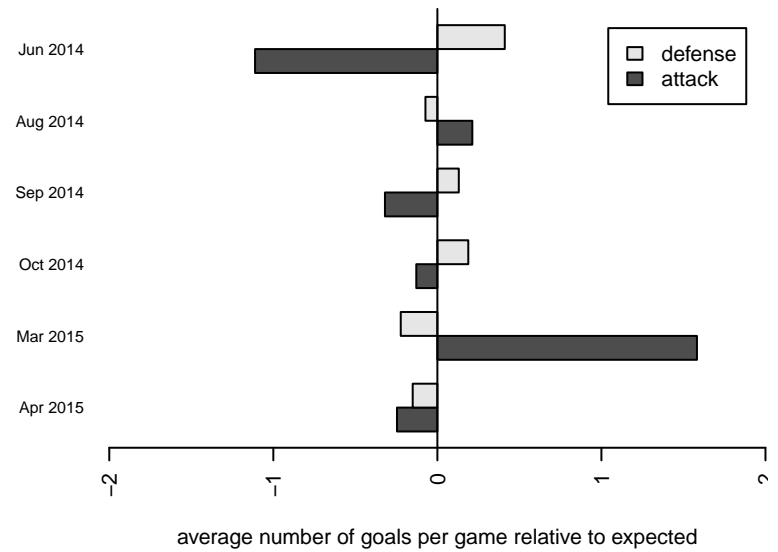
**attack and defense rating
relative to others at age
and all opponents in last 13 months**



Performance relative to 13 month average



Performance relative to 13 month average



| date | home | | away | | venue | pred.home | pred.away |
|------------|---------------------------|---|----------------------------|---|------------------------------------|-----------|-----------|
| 2015-04-25 | NW United Premier G02 | 2 | WA East Kaiel G02 | 0 | 2014 WA Cup GU12 Gold/Platinum U12 | 1.02 | 2.04 |
| 2015-04-19 | WA East Kaiel G02 | 1 | Spokane Foxes Premier G02 | 2 | 2014 Spr PSPL SuperLeague U12 | 1.39 | 1.29 |
| 2015-04-18 | Wenatchee Fire Black G02 | 2 | WA East Kaiel G02 | 6 | 2014 Spr PSPL SuperLeague U12 | 0.73 | 3.85 |
| 2015-04-12 | Breakers Merritt G02 | 0 | WA East Kaiel G02 | 4 | 2014 WA Cup GU12 Gold/Platinum U12 | 0.45 | 4.20 |
| 2015-04-11 | WA East Kaiel G02 | 4 | Academy Idaho Cads G02 | 0 | 2014 WA Cup GU12 Gold/Platinum U12 | 3.38 | 0.87 |
| 2015-04-11 | WA East Kaiel G02 | 0 | Spokane Scotties Klein G02 | 0 | 2014 WA Cup GU12 Gold/Platinum U12 | 1.62 | 0.73 |
| 2015-03-29 | WA East Kaiel G02 | 4 | CWSA Navy G02 | 1 | 2014 Spr PSPL SuperLeague U12 | 2.83 | 0.68 |
| 2015-03-28 | WA East Kaiel G02 | 4 | ASE Emerald G02 | 0 | 2014 Spr PSPL SuperLeague U12 | 2.30 | 1.63 |
| 2015-03-22 | ASE Emerald G02 | 1 | WA East Kaiel G02 | 6 | 2014 Spr PSPL SuperLeague U12 | 1.63 | 2.30 |
| 2015-03-21 | WA East Kaiel G02 | 5 | Wenatchee Fire Black G02 | 1 | 2014 Spr PSPL SuperLeague U12 | 3.85 | 0.73 |
| 2015-03-15 | CWSA Navy G02 | 1 | WA East Kaiel G02 | 3 | 2014 Spr PSPL SuperLeague U12 | 0.68 | 2.83 |
| 2015-03-14 | Spokane Foxes Premier G02 | 4 | WA East Kaiel G02 | 3 | 2014 Spr PSPL SuperLeague U12 | 1.29 | 1.39 |
| 2014-11-09 | ASE Emerald G02 | 3 | WA East Kaiel G02 | 1 | 2014 PSPL Premier U12 | 1.63 | 2.30 |
| 2014-10-25 | Spokane Foxes Premier G02 | 1 | WA East Kaiel G02 | 3 | 2014 PSPL Premier U12 | 1.29 | 1.39 |
| 2014-10-19 | TC United White G02 | 1 | WA East Kaiel G02 | 1 | 2014 PSPL Premier U12 | 0.57 | 1.84 |
| 2014-10-18 | NW United Premier G02 | 1 | WA East Kaiel G02 | 1 | 2014 PSPL Premier U12 | 1.02 | 2.04 |
| 2014-10-16 | WA East Kaiel G02 | 3 | Spokane Foxes Premier G02 | 2 | 2014 PSPL Premier U12 | 1.39 | 1.29 |
| 2014-10-12 | WA East Kaiel G02 | 0 | TC United White G02 | 0 | 2014 PSPL Premier U12 | 1.84 | 0.57 |
| 2014-10-11 | WA East Kaiel G02 | 2 | ISC Gunners A G02 | 0 | 2014 PSPL Premier U12 | 1.71 | 1.29 |
| 2014-10-05 | ISC Gunners A G02 | 1 | WA East Kaiel G02 | 1 | 2014 PSPL Premier U12 | 1.29 | 1.71 |
| 2014-09-28 | WA East Kaiel G02 | 2 | Highline Premier Blue G02 | 1 | 2014 PSPL Premier U12 | 1.97 | 0.79 |
| 2014-09-27 | WA East Kaiel G02 | 2 | NW United Premier G02 | 0 | 2014 PSPL Premier U12 | 2.04 | 1.02 |
| 2014-09-21 | WA East Kaiel G02 | 3 | MVP Marauders Navy G02 | 1 | 2014 PSPL Premier U12 | 3.05 | 0.80 |
| 2014-09-20 | WA East Kaiel G02 | 3 | ASE Emerald G02 | 1 | 2014 PSPL Premier U12 | 2.30 | 1.63 |
| 2014-09-14 | MVP Marauders Navy G02 | 1 | WA East Kaiel G02 | 3 | 2014 PSPL Premier U12 | 0.80 | 3.05 |
| 2014-09-13 | Highline Premier Blue G02 | 1 | WA East Kaiel G02 | 1 | 2014 PSPL Premier U12 | 0.79 | 1.97 |
| 2014-09-07 | WA East Kaiel G02 | 4 | Sandpoint Strikers G02 | 0 | 2014 Pend Oreille Cup GU12 11v11 | 3.42 | 0.45 |
| 2014-09-07 | WA East Kaiel G02 | 2 | Academy Idaho Cads G02 | 1 | 2014 Pend Oreille Cup GU12 11v11 | 3.38 | 0.87 |

| date | home | | away | | venue | pred.home | pred.away |
|------------|------------------------------|---|------------------------------|---|-------------------------------------|-----------|-----------|
| 2014-09-06 | WA East Kaiel G02 | 4 | XUnk Spokane Foxes G02 | 0 | 2014 Pend Oreille Cup GU12 11v11 | 5.12 | 0.37 |
| 2014-09-06 | WA East Kaiel G02 | 3 | FC Spokane Black G02 | 1 | 2014 Pend Oreille Cup GU12 11v11 | 3.88 | 0.79 |
| 2014-08-24 | WA East Kaiel G02 | 3 | Crossfire Premier S Crum G02 | 0 | 2014 REDAPT Cup Gold U12 | 1.51 | 1.37 |
| 2014-08-23 | Crossfire Premier S Crum G02 | 2 | WA East Kaiel G02 | 3 | 2014 REDAPT Cup Gold U12 | 1.37 | 1.51 |
| 2014-08-23 | WA East Kaiel G02 | 5 | Seattle United S Blue G02 | 0 | 2014 REDAPT Cup Gold U12 | 6.34 | 0.40 |
| 2014-08-22 | Wenatchee Fire Black G02 | 1 | WA East Kaiel G02 | 4 | 2014 REDAPT Cup Gold U12 | 0.73 | 3.85 |
| 2014-08-10 | WA East Kaiel G02 | 4 | CDA Sting AC Milan G02 | 0 | 2014 Les Schwab NW Cup U12 Gold U12 | 5.09 | 0.58 |
| 2014-08-10 | Spokane Foxes Premier G02 | 3 | WA East Kaiel G02 | 1 | 2014 Les Schwab NW Cup U12 Gold U12 | 1.29 | 1.39 |
| 2014-08-09 | Academy Idaho Cads G02 | 1 | WA East Kaiel G02 | 7 | 2014 Les Schwab NW Cup U12 Gold U12 | 0.87 | 3.38 |
| 2014-08-09 | WA East Kaiel G02 | 0 | Spokane Foxes Premier G02 | 1 | 2014 Les Schwab NW Cup U12 Gold U12 | 1.39 | 1.29 |
| 2014-08-08 | SSC Shadow A G02 | 2 | WA East Kaiel G02 | 2 | 2014 Les Schwab NW Cup U12 Gold U12 | 1.44 | 2.63 |
| 2014-06-15 | WA East Kaiel G02 | 4 | WA East Team Sky G02 | 0 | 2014 Olivia Chaffin GU12 | 6.82 | 0.31 |
| 2014-06-14 | SSC Shadow Elite Sennott G02 | 0 | WA East Kaiel G02 | 8 | 2014 Olivia Chaffin GU12 | 0.21 | 14.84 |
| 2014-06-14 | WA East Kaiel G02 | 7 | FC Spokane Black G02 | 0 | 2014 Olivia Chaffin GU12 | 3.88 | 0.79 |
| 2014-06-13 | WA East Kaiel G02 | 8 | Spokane Foxes Emerald G02 | 0 | 2014 Olivia Chaffin GU12 | 5.90 | 0.33 |